



SOLCREST

Off Hennur Road



**bricks
& milestones**

Spaces that understand living

At Bricks & Milestones, design is a thoughtful dialogue between space and life. Each home is planned with restraint and clarity, where proportions breathe, light finds its path and details serve a purpose. Beyond form and function, our design reflects how people live, gather, pause and grow. Because meaningful design does not demand attention, it earns it over time.



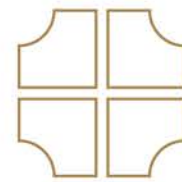
Large open spaces



No common walls



Vastu-compliant homes



Mostly corner units



Extensive landscaping



No balcony facing each other

“

At Solcrest, we've crafted a master plan that redefines the meaning of spacious living. Our design philosophy is rooted in creating a serene oasis that harmonizes with nature, where every resident can unwind and recharge. With expansive open spaces and a low-density layout, we've ensured that every home enjoys ample natural light, gentle breezes, and unobstructed views.

Our towers are strategically positioned to not only maximize these benefits but also provide unparalleled privacy. The wide, curved balconies invite you to step out and breathe in the fresh air, blurring the lines between indoors and outdoors. We've drawn inspiration from the earthy tones of the region, infusing the architecture with a sense of warmth and belonging.

As you enter Solcrest, the grand entrance lobby sets the tone for a vibrant community experience. Our carefully curated ground-level amenities are designed to foster connections and create lifelong memories. At Solcrest, we're not just building homes – we're crafting a sanctuary that nurtures body, mind, and soul.

Warm regards,

Naresh Narasimhan

Principal Architect
Venkataramanan Associates

”



Artist's impression

From now to what's next
YOU ARE everywhere

Life takes you everywhere.
Home brings you back.

They found a place designed to support the life they wanted to live. Their days begin early, shaped by two calendars, two careers and a city that never slows down. Work draws them east, opportunity rises in the north and evenings stretch between commitments, connections, and the need to pause. Somewhere along the way, one thing became clear, home shouldn't add distance to life.

INTRODUCING

SOLCREST

The centre of your everyday story

That clarity led them to Solcrest. Placed between East and North Bengaluru, it simplified everyday movement and brought balance to busy lives. Here, confidence came from being well-placed, close to work, close to growth and close to the moments that matter.

Solcrest didn't change how they live; it refined it.





Artist's impression

Homes that respect space and people

They began to notice how naturally everything fell into place. The way homes felt open yet private, movement stayed clear and unhurried, and light and air flowed with ease.



Set across
9.3 acres



Extensive landscaping
90% open space
(8.35 acres)



796 Carefully
planned homes



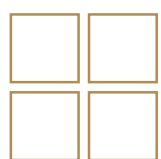
East & West
facing balconies



Linear curved
balconies



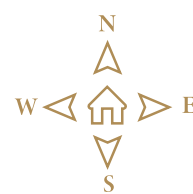
Large kitchen



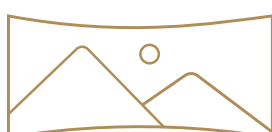
Only 4 units in
a core



No common
walls



Vastu-compliant
units



Wide, 180 degree
panoramic views

Sunlight, orientation & openness

Over time, the home began responding to the day around it. Sunlight traced its way through mornings and evenings, spaces stayed open and breathable, and comfort settled in without adjustment. What emerged was a way of living shaped by light, orientation, and ease; quietly efficient, naturally refined.





Grand, double-height lobby

They noticed how effortlessly everything came together. A double-height arrival space, filled with daylight and softened by greenery, opened toward water and landscape, anchored by a statement reception. Beyond first impressions, the lobby became a place to pause, meet, and connect, where conversations, co-working moments, and transitions unfolded naturally. A central point where days slowed, people gathered, and life reset with ease.





Artist's impression

Landscape-first design approach

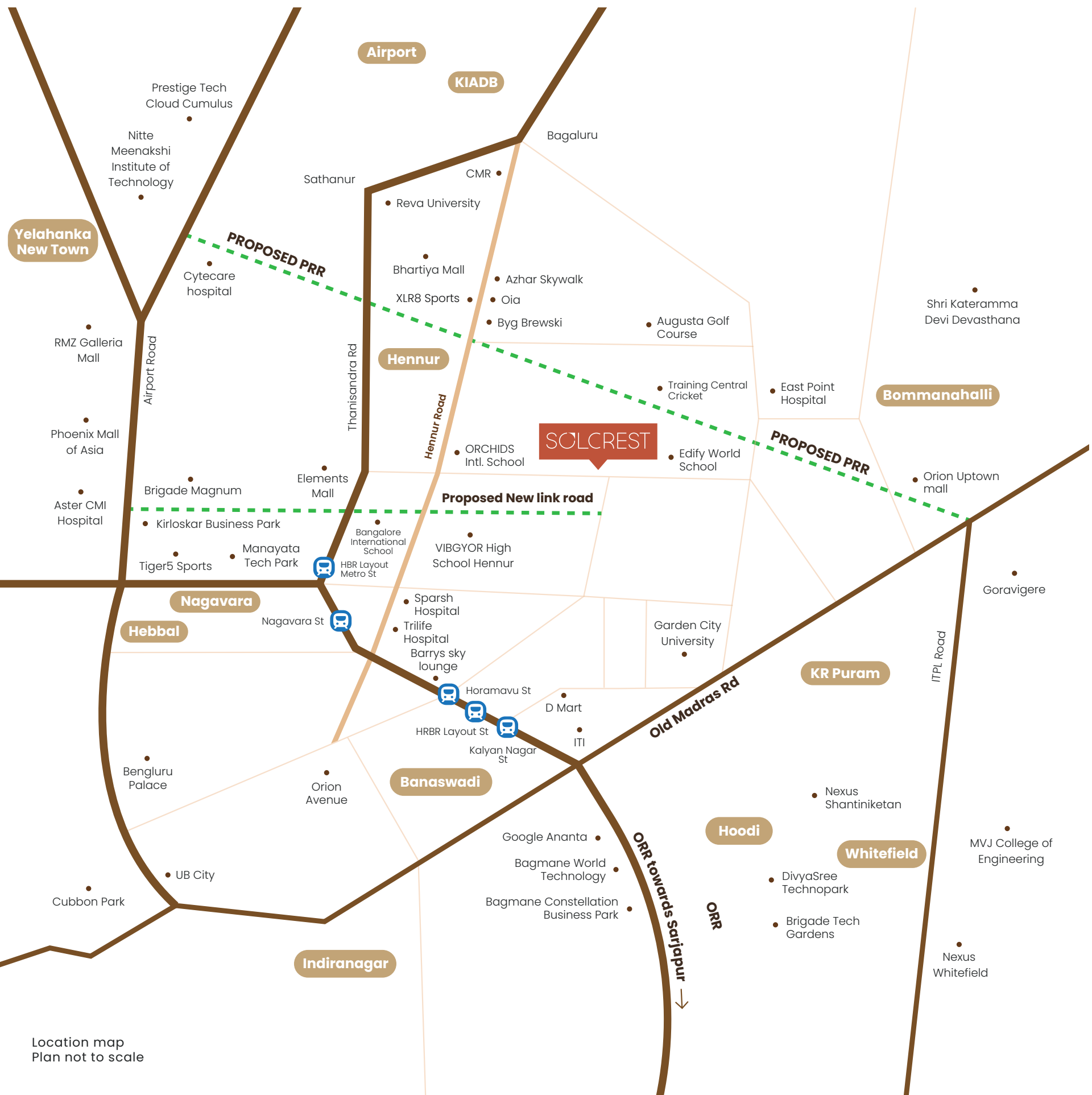
Life unfolded effortlessly around them. From direct step-out access to thoughtfully clustered spaces, every movement felt intuitive. Green landscapes guided the day, inviting walks, conversations, and quiet pauses, while amenities stayed close without feeling crowded. Nothing demanded attention. Everything simply worked together, creating a setting where living felt calm, connected and complete.



Artist's impression

EVERYTHING COMFORTABLY WITHIN REACH

YOU ARE everyw**HERE!**



Where opportunity stays within reach

With key IT and business hubs close by, work fell naturally into place. Commutes felt predictable, days easier to manage, and careers could grow without putting life on hold. Here, work stayed important, but it no longer dictated the day.

IT PARKS & WORK HUBS

Within **30 mins**

- KIADB Aerospace Park
- Bhartiya Centre of Information Technology
- Manyata Tech Park
- Bagmane Tech Park
- Sattva Horizon (Amazon)
- Google Ananta
- Divyashree Avance
- Bagmane World Technology Center
- RMZ Infinity
- World Trade Center
- Divyasree Technopark
- Kirloskar Business Park
- Prestige Tech Park
- Embassy Tech Village
- Kalyani Tech Park
- Cessna Tech Park

Within **60 mins**

- Prestige Tech Cloud Cumulus
- PHILIPS Innovation Campus
- Bagmane Sierra
- Brigade Magnum
- Brigade Opus
- RMZ Ecoworld
- Embassy Golf Link Business Park
- UB City
- Brigade Tech Gardens
- Bagmane Constellation Business Park
- ITPL
- Bagmane Capital Campus

Where life finds its rhythm

Life began to organise itself around ease. Everyday essentials stayed within reach, routines felt lighter, and free time appeared where it hadn't before. Evenings opened up, weekends felt unforced, and living expanded beyond schedules into something more fluid.

SOCIAL INFRASTRUCTURE

Within 15 mins



EDUCATION

Bangalore International School
VIBGYOR High School
Edify World School, Bileshivale
Orchids International School



SPORTS & WELLNESS

The Training Central Cricket Academy
Blue Caps Sports Arena - Pickleball
Skanda Sports
Prestige Augusta Golf Village



CAFÉS, DINING & SOCIAL SPACES

Hops Pub
Pendleton Park



HEALTHCARE

East Point Hospital
Cratis Hospital
Koshys Hospital



NATURE & OPEN SPACES

Horamavu Agara lake
Maragondanahalli Lake
Kalkere Lake

Within 30 mins



EDUCATION

Reva University
CMR University (City Campus)



SPORTS & WELLNESS

Azhar Skywalk Cricket Academy
XLR8 Indoor Sports Arena
Tiger5 Sports Arena



CAFÉS, DINING & SOCIAL SPACES

Restopub
Oia Pub
Barrys Sky Lounge
Byg Brewski



HEALTHCARE

Sparsh Hospital
Trilife Hospital



RETAIL & MALLS

Orion Uptown Mall
Orion Avenue Mall
Elements Mall
Bhartiya Mall Of Bengaluru



NATURE & OPEN SPACES

Bamboo Forest

Within 60 mins



HEALTHCARE

Aster CMI Hospital New Airport Road
Cytecure Hospital



RETAIL & MALLS

NEXUS Shantiniketan Mall
NEXUS Whitefield
UB City
Phoenix mall of ASIA
RMZ Galleria Mall



Airport

Kempegowda International Airport Bengaluru

LEGEND

- 01 Entry/Exit with security cabin
- 02 Signage wall
- 03 Bus pickup zone
- 04 Driveway
- 05 Arrival plaza with water feature
- 06 Pedestrian/jogging path
- 07 Bicycle path
- 08 Fire driveway
- 09 Round about
- 10 Pickleball court
- 11 Pet park
- 12 Event lawn
- 13 Swimming pool
- 14 Changing room
- 15 Trampoline park
- 16 Children's play area
- 17 Outdoor gym
- 18 Shade structure with seating
- 19 Toddler's play area
- 20 Play lawn
- 21 Sand pit
- 22 Skate park
- 23 Basketball practice court
- 24 Multi-purpose sand court
 - Beach volley ball
 - Kabaddi
- 25 Informal co-working
- 26 Co-working with water feature
- 27 Multi-purpose lawn
- 28 Gallery seating with shade structure
- 29 Tennis court
- 30 Surface parking
- 31 Mini soccer
- 32 Informal seating with shade structure
- 33 Box cricket

MASTER PLAN

CLUBHOUSE AMENITIES

- Banquet with outdoor area
- Provision for creche
- Squash court
- 2 badminton courts
- Poker room
- Billiards
- Table tennis court
- Indoor games
- Provision for salon
- Jamming room with musical instruments
- Gym with space provision for steam/sauna rooms
- Yoga/zumba room
- Activity room
- Association office
- Open air yoga deck
- Rooftop social deck with service counter
- Space for bistro cafe

AMENITIES IN THE TOWER LOBBY

- Co-working spaces
- Hobby rooms/classrooms





Artist's impression

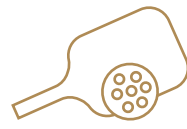
A place for life to happen



Tennis court



Basketball court



Pickle ball



Pet park



Multipurpose zone



Mini soccer



Activity room



Volleyball court



Multi-purpose lawn



Skate park



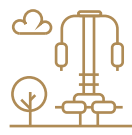
Trampoline park



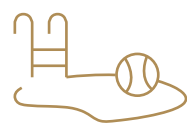
Bicycle path



Jogging path



Outdoor gym



Swimming pool



Co working spaces



Box cricket



Children's play area



Space for cafe

Where arrival becomes home

This was the point of change. The tower entrance marked the end of the workday and the return to home, calm, ordered, and uninterrupted. From here, every step felt closer to home.



Artist's impression



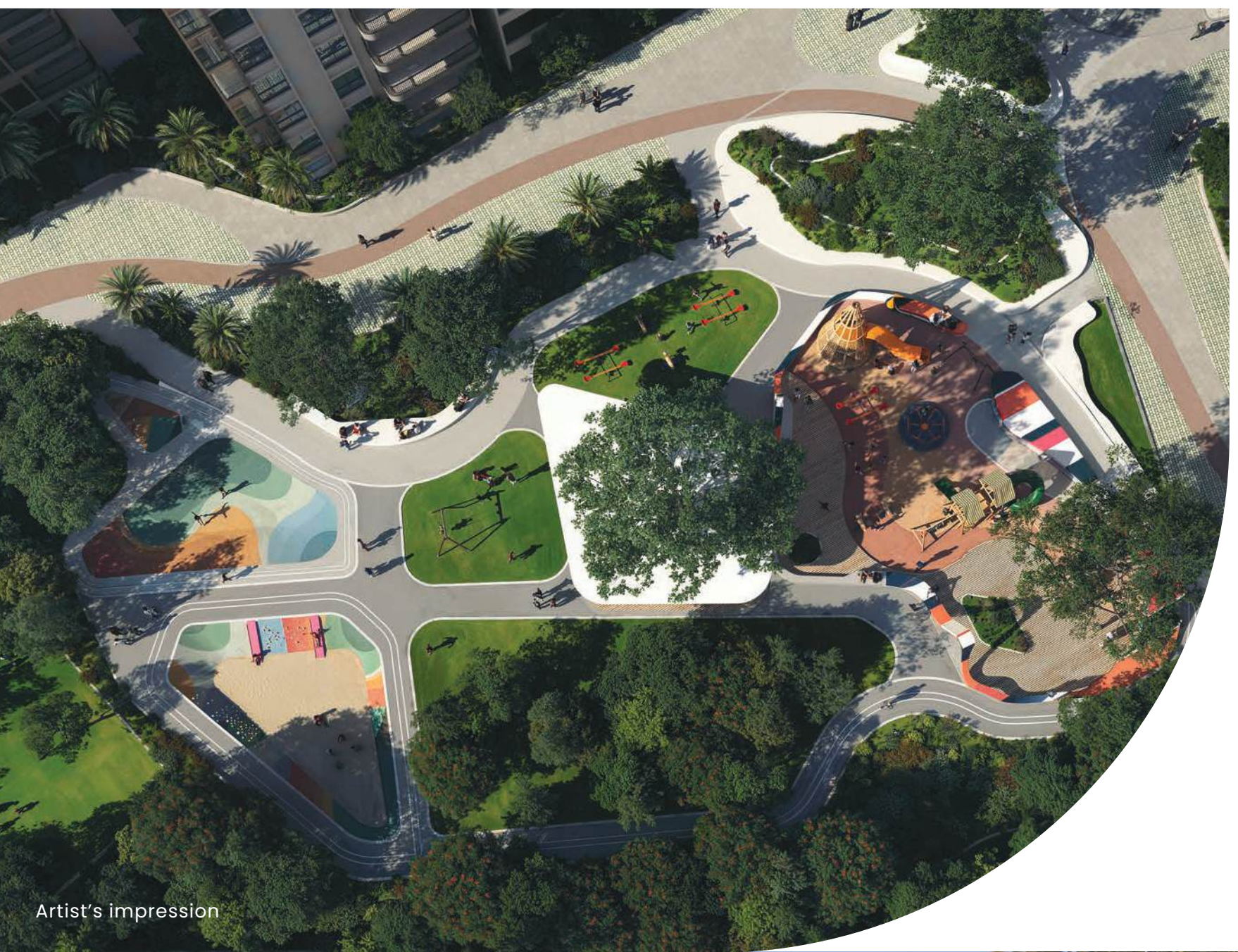
Artist's impression

Where evenings find their place

They noticed it one evening—the open lawn, the quiet stage, the ease of gathering. Over time, it became where celebrations unfolded naturally and shared moments lingered.

Where life opens up

From above, it felt expansive. On the ground, it became personal. Space for play, conversation, and calm under open skies.



Artist's impression



Artist's impression

Where time is shared, not scheduled

This place became part of their day without asking for attention. A seat for conversations, a pause between thoughts, sometimes a place to work; often, just a reason to stay a little longer.

Where play becomes part of life

Set within open surroundings, the sports arena invited motion without pressure. Games unfolded easily, energy found direction and everyday life gained a dynamic balance.



Artist's impression



Artist's impression

An unhurried stretch of blue

As the sun dipped lower, the water reflected a quieter rhythm. The warmth of the day lingered, the air stayed open, and everything else felt less important. It became a place for slow swims, longer silences, and moments that didn't need to be named. Here, time wasn't managed, it was simply allowed to pass.

Where childhood finds its space

They began to notice how naturally their children found their rhythm here. The children's play area became more than a corner of the landscape-it became where confidence, friendships, and laughter quietly grew every day.



Artist's impression



Artist's impression

And as evenings softened, the same space felt different. Slides, splash zones, open courts - all part of a childhood unfolding safely within sight, yet freely on its own.

Where play is always in view

They found a different kind of comfort here. A gallery with a shaded structure overlooking the tennis court - where matches unfold in sight, conversations linger and presence feels effortless.



Where the everyday feels composed

Just beyond the play areas, they found another kind of space. These sculpted seating pods invited pauses - a quick call, an unplanned conversation, or simply a moment to sit under open skies.

Where time lingers a little longer

Some spaces are made for slowing down. Under the shaded pavilion, conversations stretch longer, children drift between play and rest, and afternoons unfold without rush.



Artist's impression



Artist's impression

Where community comes alive

And then there are places meant simply for being together. The curved seating court becomes where stories are shared, neighbours turn familiar, and community begins to feel effortless.



Artist's impression

CLUB AMARA

Form that follows living

Where movement slows, conversations flow and time feels less measured. Designed with clarity and restraint, Club Amara brings together spaces for wellness, recreation, and quiet retreat, all connected through intuitive planning and effortless access. Across every Bricks & Milestones community, Club Amara remains a familiar presence; a space residents return to instinctively, every day.



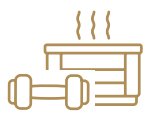
30,000 sq.ft. lifestyle hub



Banquet with outdoor area



Rooftop social deck



Gym with provision for steam



Open air yoga deck



Badminton courts



Table tennis



Billiards



Indoor games area



Squash court



Activity room



Co working spaces



Jamming room with musical instruments



Poker room



Provision For salon



Yoga/
Zumba room



Provision for creche



Space for cafe

FLOOR PLAN

WING A

TYPICAL FLOOR PLAN



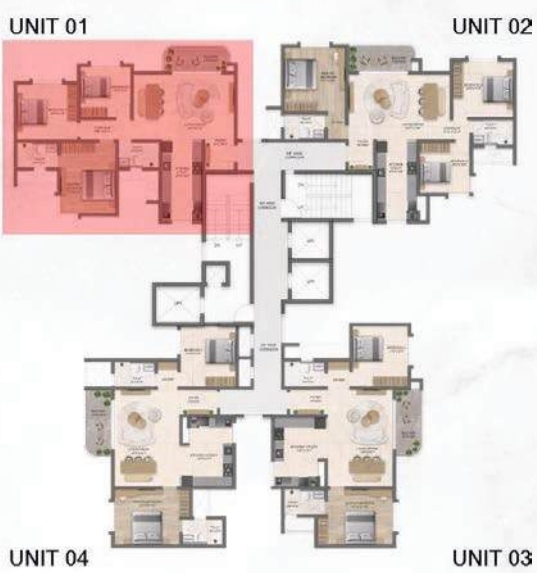
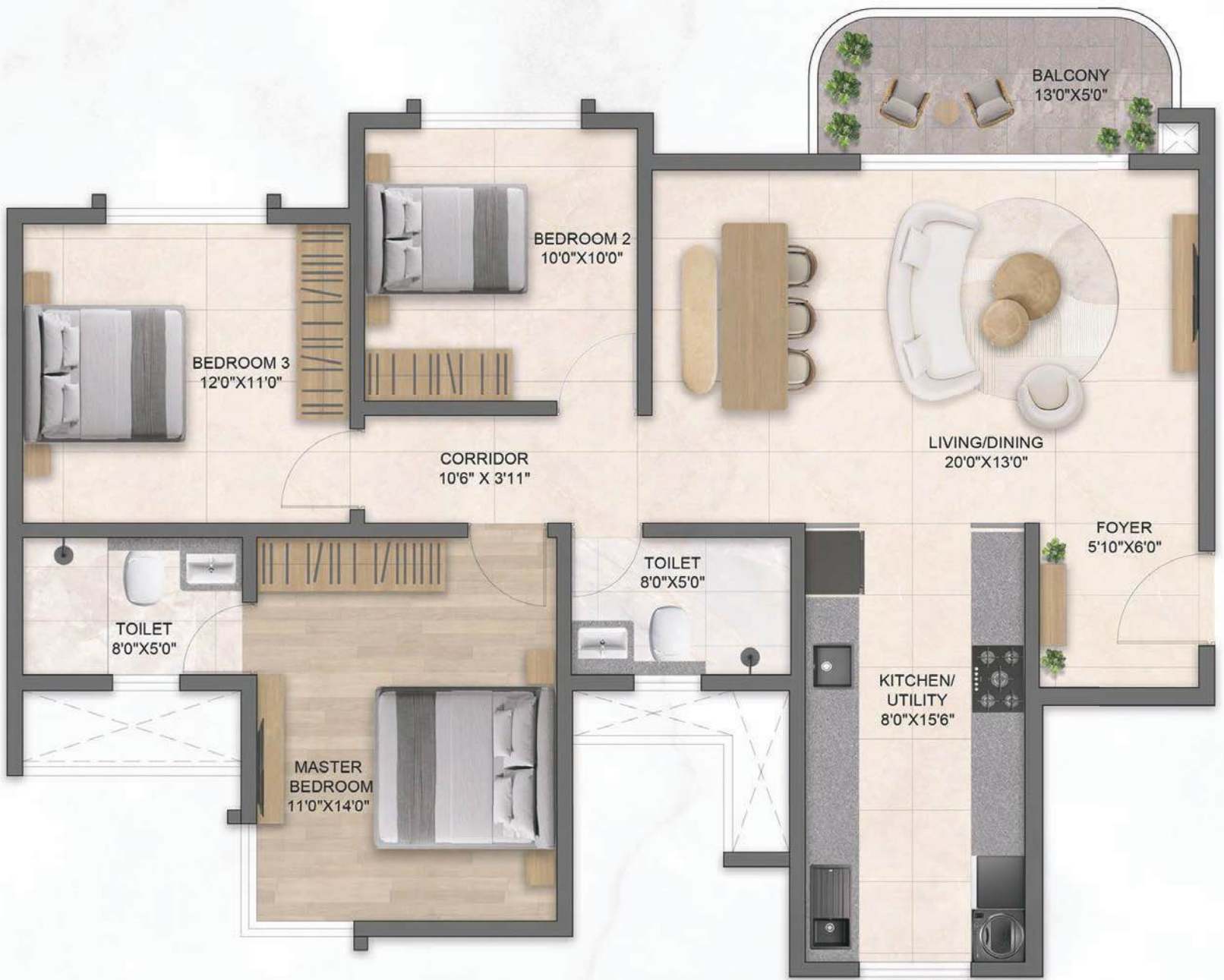
MASTER KEY PLAN

TYPICAL FLOOR

UNIT NO.S	TPOLOGY	RERA CARPET AREA (SQFT)	BALCONY AREA (SQFT)	SUPER BUILT-UP AREA (SQFT)
0001 to 3301	3 BHK	989	69	1533
0002 to 3302	3 BHK	978	68	1516
0203 to 3303	2 BHK	860	70	1347
0004 to 1804, 2004 to 2804, 3004 to 3304	2 BHK	849	70	1332

WING A

TYPICAL FLOOR UNIT 01



KEY PLAN



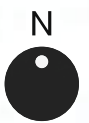
MASTER KEY PLAN

TYPICAL FLOOR

UNIT NO.S	TPOLOGY	RERA CARPET AREA (SQFT)	BALCONY AREA (SQFT)	SUPER BUILT-UP AREA (SQFT)
0001 to 3301	3 BHK	989	69	1533

WING A

TYPICAL FLOOR UNIT 02

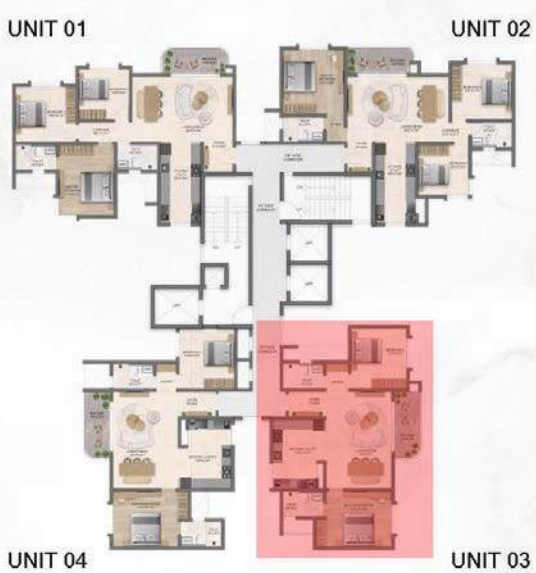
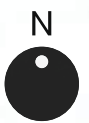


TYPICAL FLOOR

UNIT NO.S	TPOLOGY	RERA CARPET AREA (SQFT)	BALCONY AREA (SQFT)	SUPER BUILT-UP AREA (SQFT)
0002 to 3302	3 BHK	978	68	1516

WING A

TYPICAL FLOOR UNIT 03



KEY PLAN



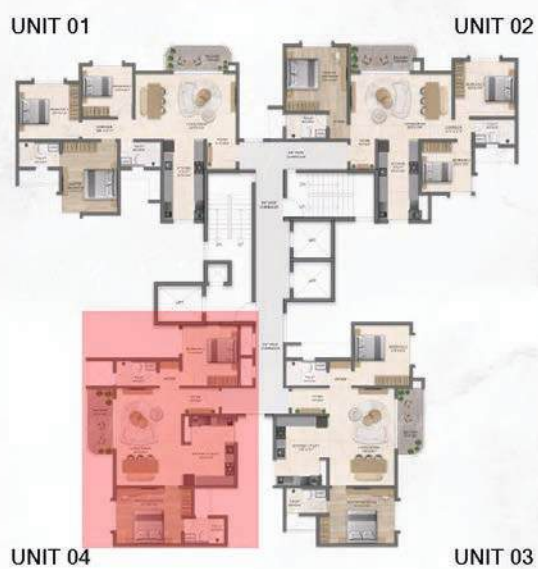
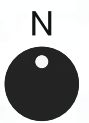
MASTER KEY PLAN

TYPICAL FLOOR

UNIT NO.S	TPOLOGY	RERA CARPET AREA (SQFT)	BALCONY AREA (SQFT)	SUPER BUILT-UP AREA (SQFT)
0203 to 3303	2 BHK	860	70	1347

WING A

TYPICAL FLOOR UNIT 04



KEY PLAN



MASTER KEY PLAN

TYPICAL FLOOR

UNIT NO.S	TYOLOGY	RERA CARPET AREA (SQFT)	BALCONY AREA (SQFT)	SUPER BUILT-UP AREA (SQFT)
0004 to 1804, 2004 to 2804, 3004 to 3304	2 BHK	849	70	1332

WING B

TYPICAL FLOOR PLAN



MASTER KEY PLAN

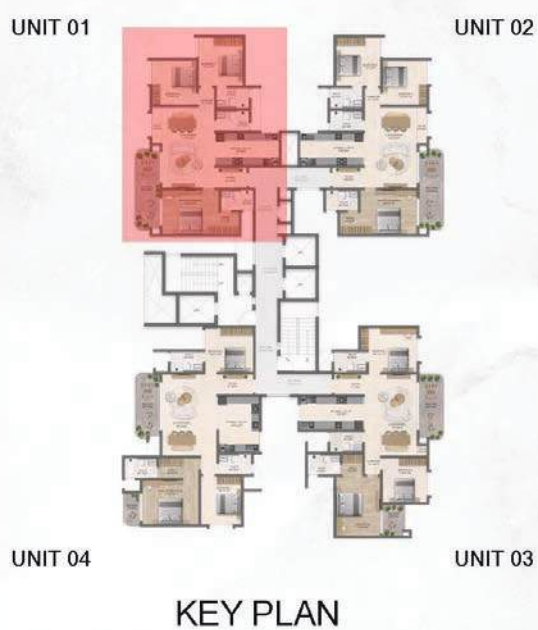
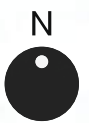


TYPICAL FLOOR

UNIT NO.S	TPOLOGY	RERA CARPET AREA (SQFT)	BALCONY AREA (SQFT)	SUPER BUILT-UP AREA (SQFT)
0101 to 3301	3 BHK PLUS	1093	125	1764
0202 to 3302	3 BHK PLUS	1093	125	1764
0203 to 3303	3 BHK PLUS	1091	146	1793
0104 to 1804, 2004 to 2804, 3004 to 3304	3 BHK PLUS	1127	134	1828

WING B

TYPICAL FLOOR UNIT 01

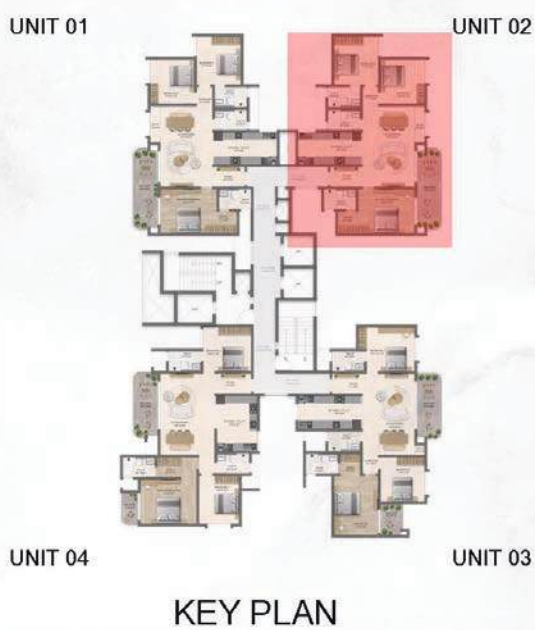


TYPICAL FLOOR

UNIT NO.S	TPOLOGY	RERA CARPET AREA (SQFT)	BALCONY AREA (SQFT)	SUPER BUILT-UP AREA (SQFT)
0101 to 3301	3 BHK PLUS	1093	125	1764

WING B

TYPICAL FLOOR UNIT 02

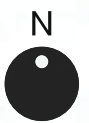
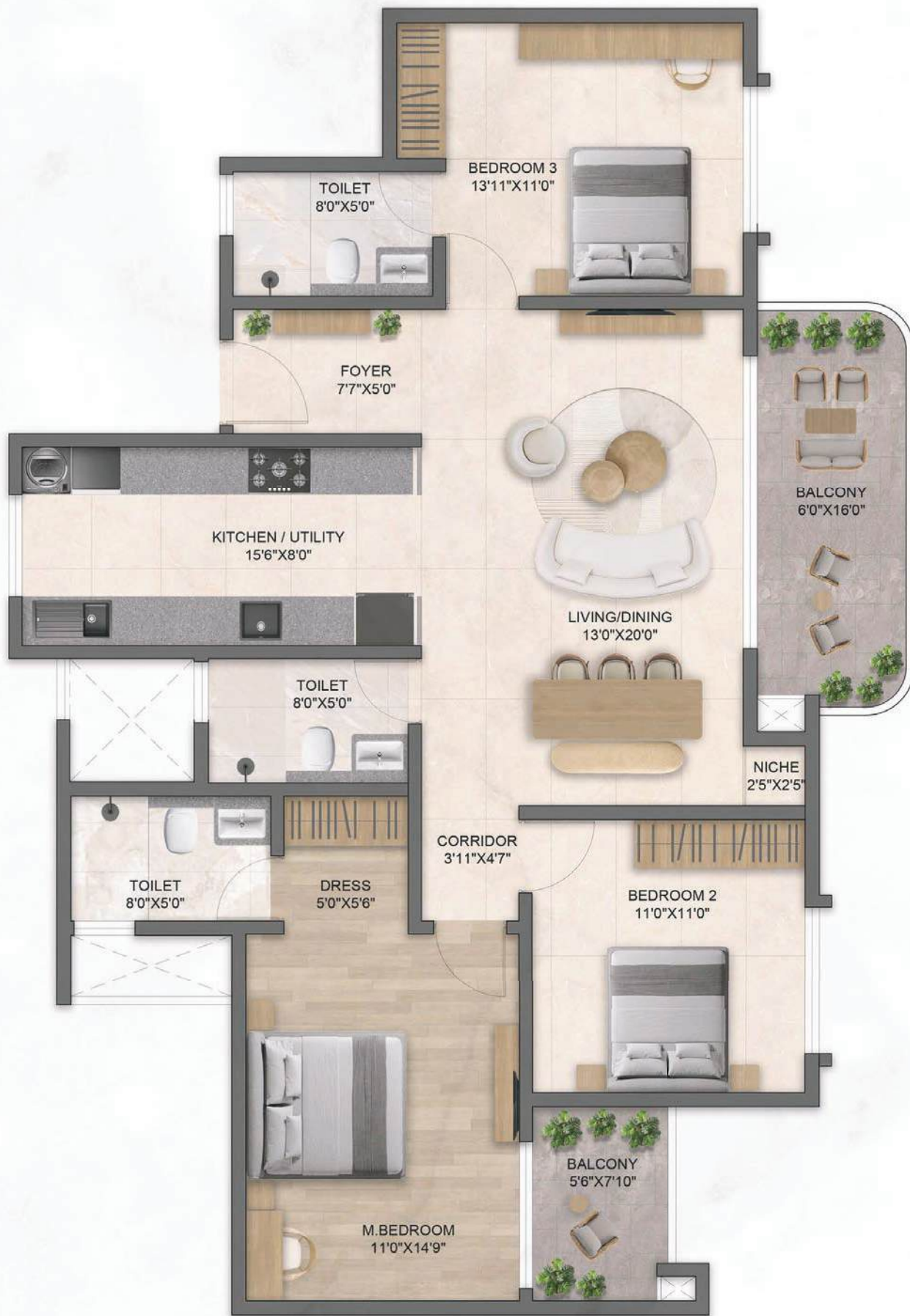


TYPICAL FLOOR

UNIT NO.S	TPOLOGY	RERA CARPET AREA (SQFT)	BALCONY AREA (SQFT)	SUPER BUILT-UP AREA (SQFT)
0202 to 3302	3 BHK PLUS	1093	125	1764

WING B

TYPICAL FLOOR UNIT 03

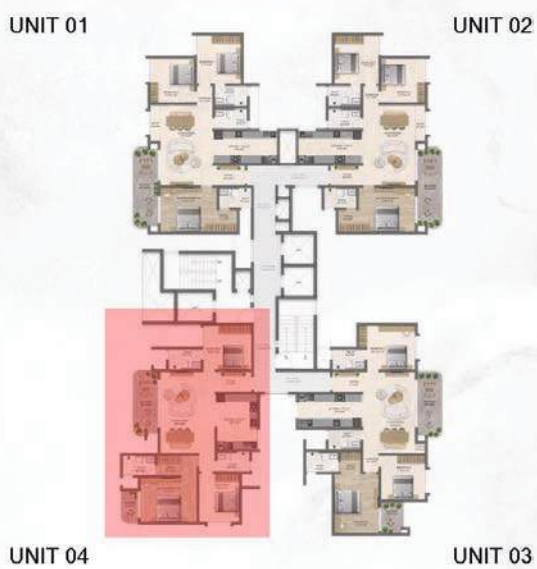


TYPICAL FLOOR

UNIT NO.S	TPOLOGY	RERA CARPET AREA (SQFT)	BALCONY AREA (SQFT)	SUPER BUILT-UP AREA (SQFT)
0203 to 3303	3 BHK PLUS	1091	146	1793

WING B

TYPICAL FLOOR UNIT 04



KEY PLAN



MASTER KEY PLAN

TYPICAL FLOOR

UNIT NO.S	TYOLOGY	RERA CARPET AREA (SQFT)	BALCONY AREA (SQFT)	SUPER BUILT-UP AREA (SQFT)
0104 to 1804, 2004 to 2804, 3004 to 3304	3 BHK PLUS	1127	134	1828

WING C

TYPICAL FLOOR PLAN



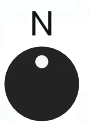
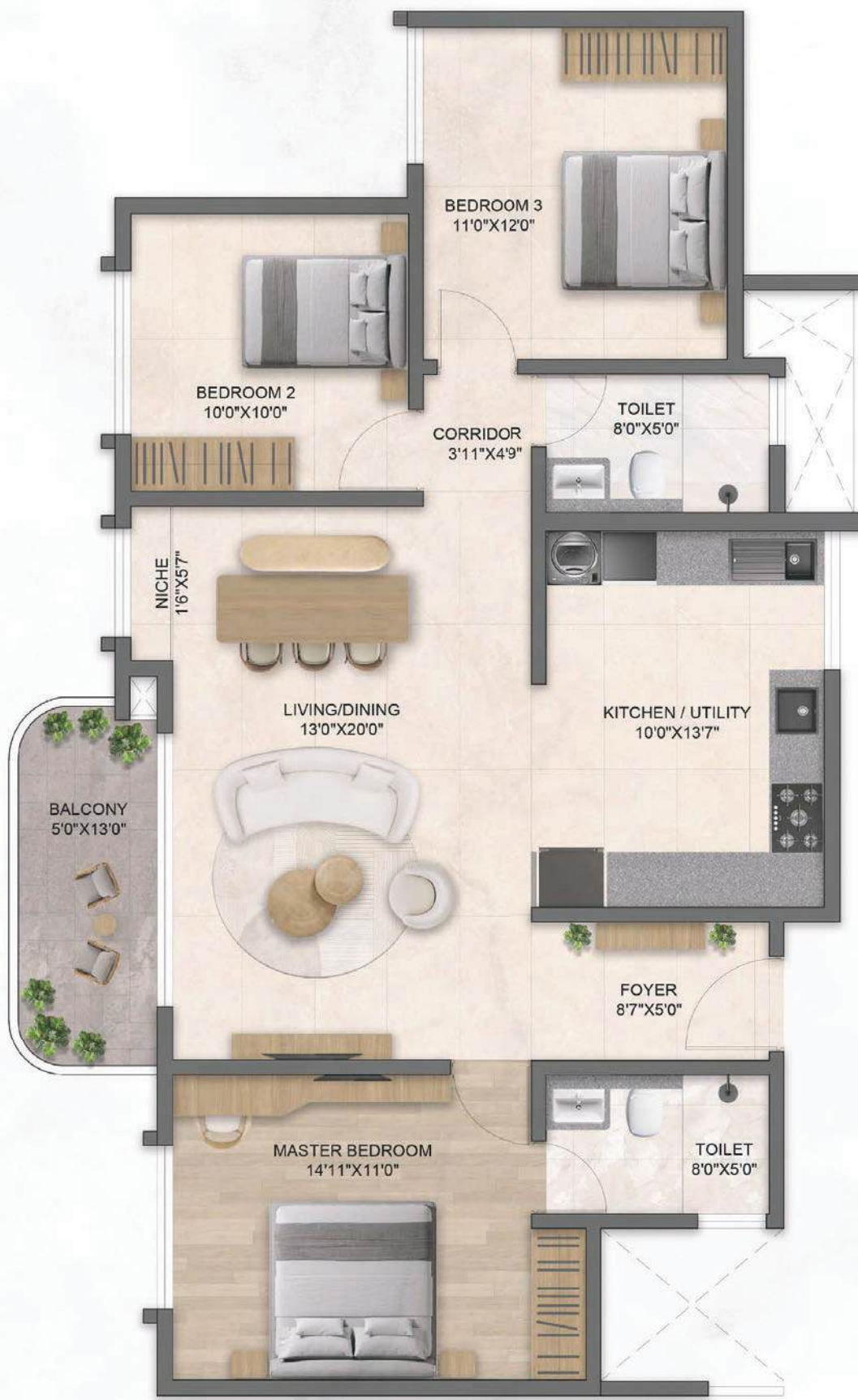
MASTER KEY PLAN

TYPICAL FLOOR

UNIT NO.S	TPOLOGY	RERA CARPET AREA (SQFT)	BALCONY AREA (SQFT)	SUPER BUILT-UP AREA (SQFT)
0001 to 3301	3 BHK	996	69	1544
0202 to 1802, 2002 to 2802, 3002 to 3302	3 BHK	991	69	1536
0003 to 3303	3 BHK	994	70	1542
0004 to 3304	3 BHK	999	69	1547

WING C

TYPICAL FLOOR UNIT 01

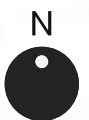
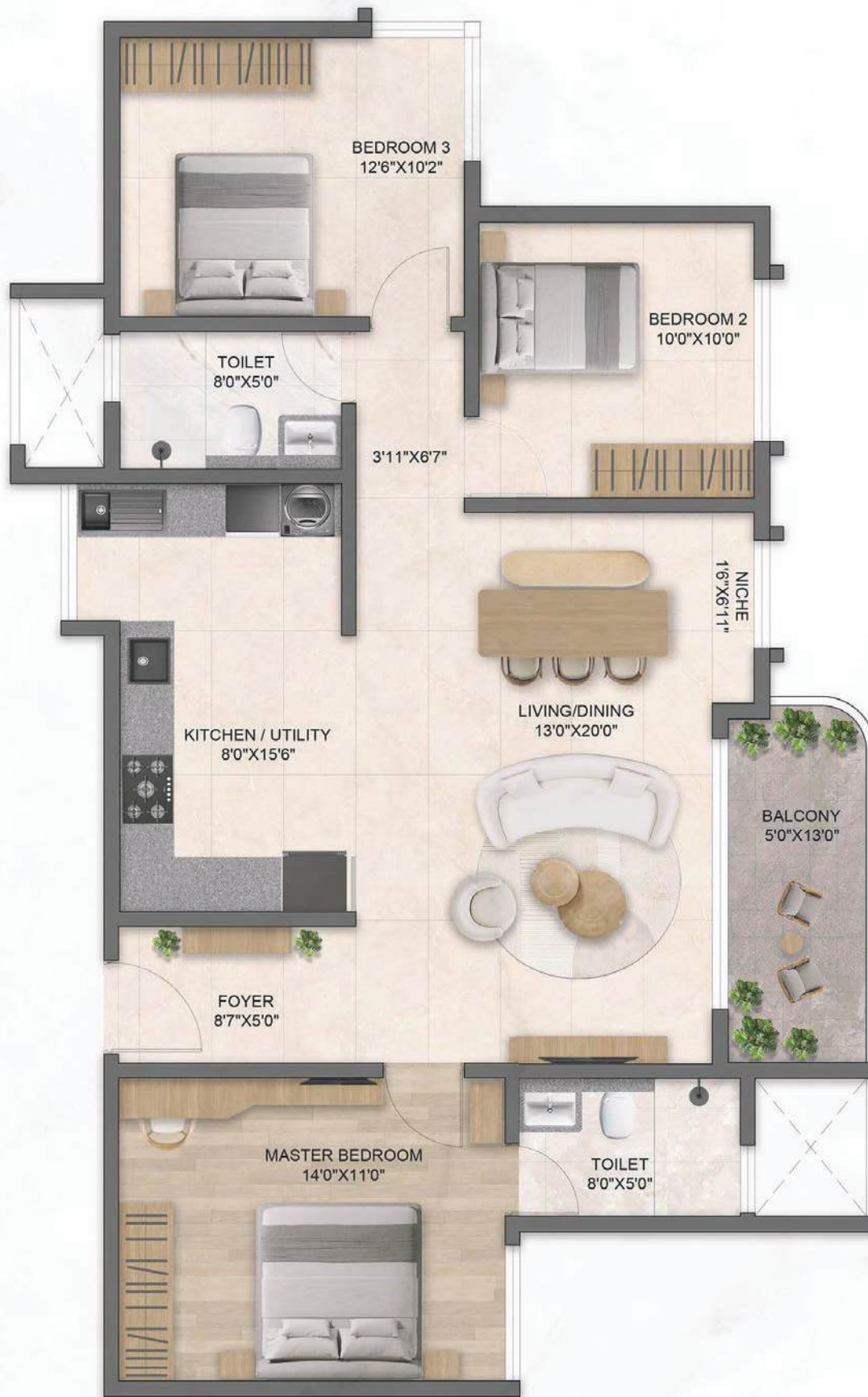


TYPICAL FLOOR

UNIT NO.S	TYOLOGY	RERA CARPET AREA (SQFT)	BALCONY AREA (SQFT)	SUPER BUILT-UP AREA (SQFT)
0001 to 3301	3 BHK	996	69	1544

WING C

TYPICAL FLOOR UNIT 02



KEY PLAN



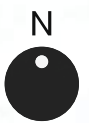
MASTER KEY PLAN

TYPICAL FLOOR

UNIT NO.S	TPOLOGY	RERA CARPET AREA (SQFT)	BALCONY AREA (SQFT)	SUPER BUILT-UP AREA (SQFT)
0202 to 1802, 2002 to 2802, 3002 to 3302	3 BHK	991	69	1536

WING C

TYPICAL FLOOR UNIT 03

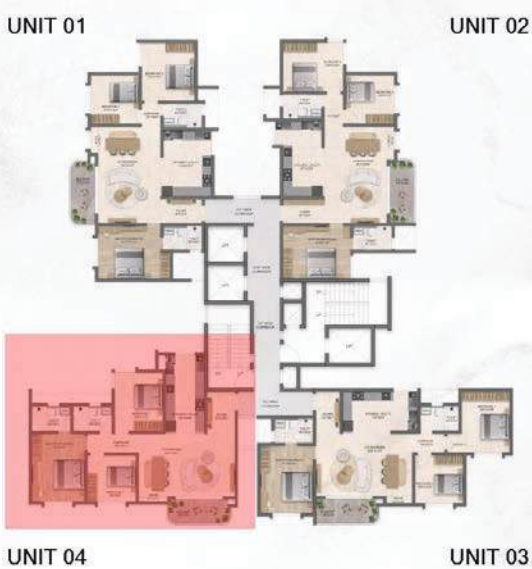
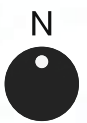
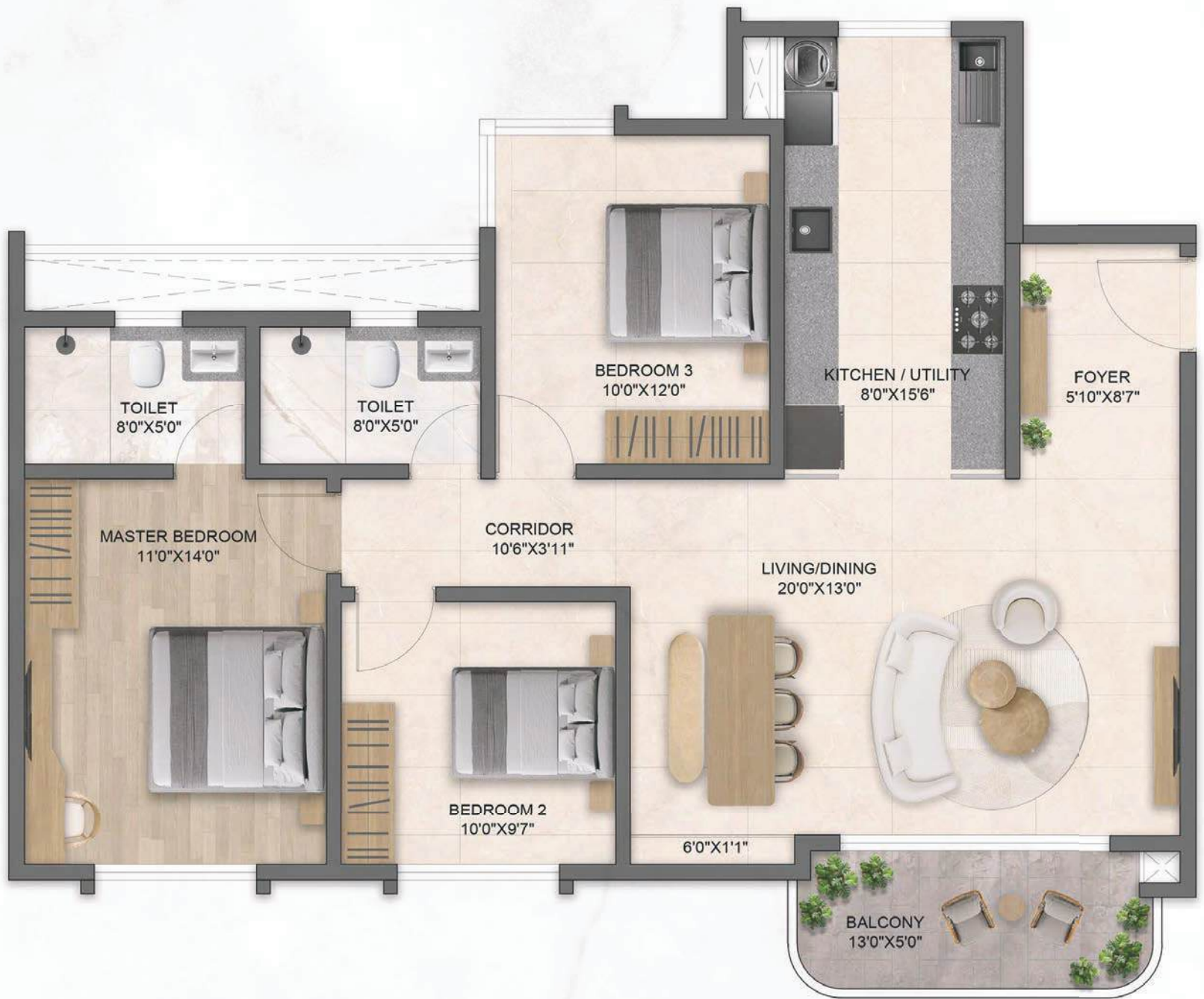


TYPICAL FLOOR

UNIT NO.S	TYOLOGY	RERA CARPET AREA (SQFT)	BALCONY AREA (SQFT)	SUPER BUILT-UP AREA (SQFT)
0003 to 3303	3 BHK	994	70	1542

WING C

TYPICAL FLOOR UNIT 04



KEY PLAN



MASTER KEY PLAN

TYPICAL FLOOR

UNIT NO.S	TPOLOGY	RERA CARPET AREA (SQFT)	BALCONY AREA (SQFT)	SUPER BUILT-UP AREA (SQFT)
0004 to 3304	3 BHK	999	69	1547

WING D

TYPICAL FLOOR PLAN



MASTER KEY PLAN



TYPICAL FLOOR

UNIT NO.S	TPOLOGY	RERA CARPET AREA (SQFT)	BALCONY AREA (SQFT)	SUPER BUILT-UP AREA (SQFT)
0001 to 3301	3 BHK PLUS	1100	126	1776
0002 to 3302	4 BHK	1345	148	2164
0003 to 3303	3.5 BHK	1232	143	1992
0204 to 1804, 2024 to 2804, 3004 to 3304	3 BHK PLUS	1127	134	1828

WING D

TYPICAL FLOOR UNIT 01

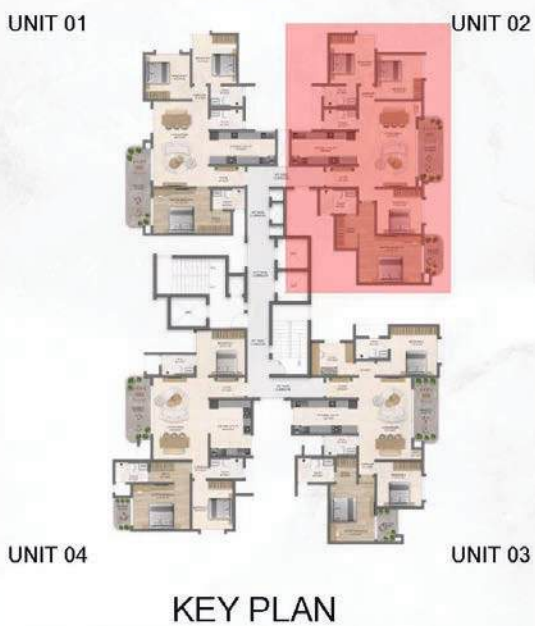
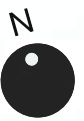


TYPICAL FLOOR

UNIT NO.S	TPOLOGY	RERA CARPET AREA (SQFT)	BALCONY AREA (SQFT)	SUPER BUILT-UP AREA (SQFT)
0001 to 3301	3 BHK PLUS	1100	126	1776

WING D

TYPICAL FLOOR UNIT 02

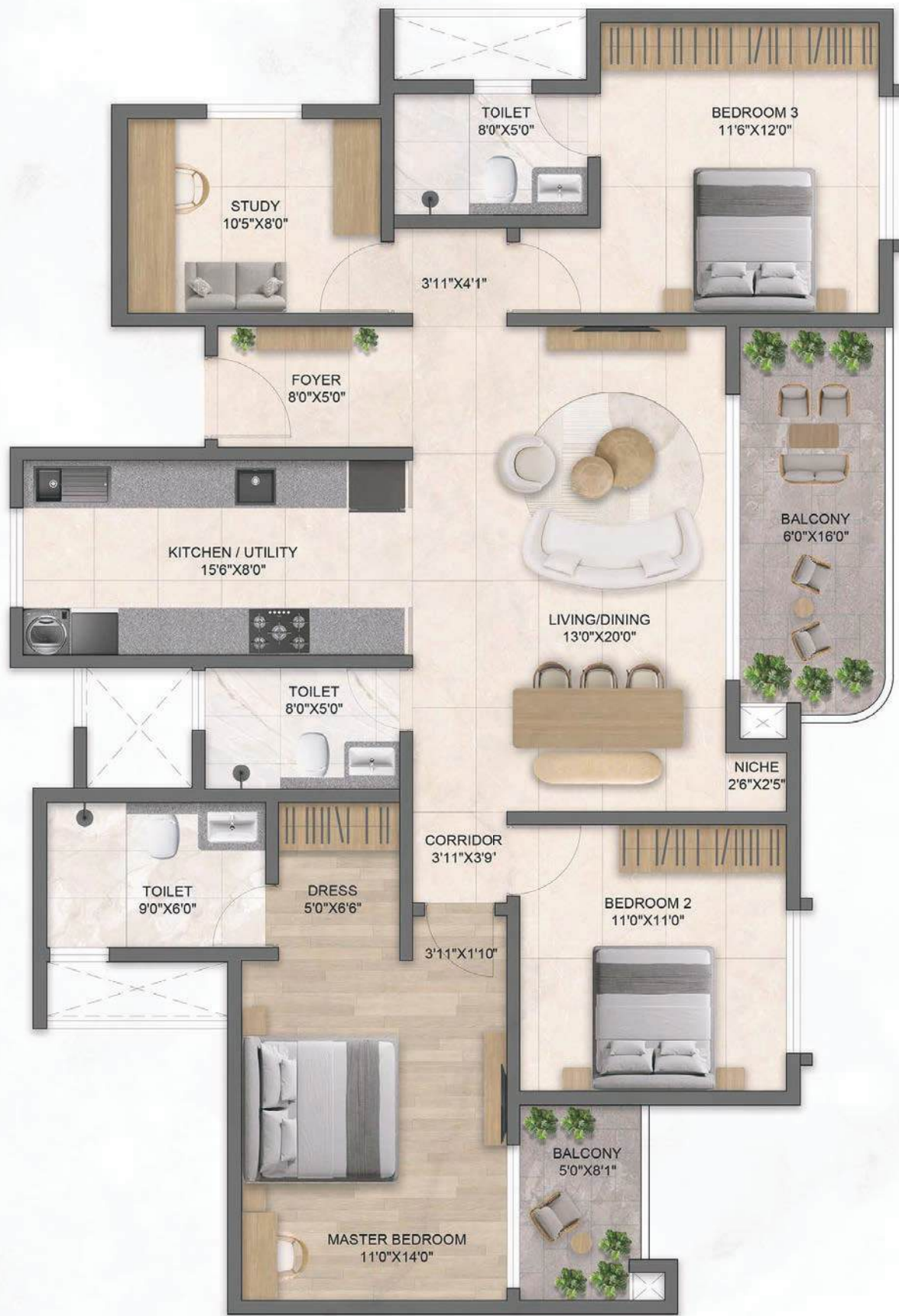


TYPICAL FLOOR

UNIT NO.S	TYOLOGY	RERA CARPET AREA (SQFT)	BALCONY AREA (SQFT)	SUPER BUILT-UP AREA (SQFT)
0002 to 3302	4 BHK	1345	148	2164

WING D

TYPICAL FLOOR UNIT 03

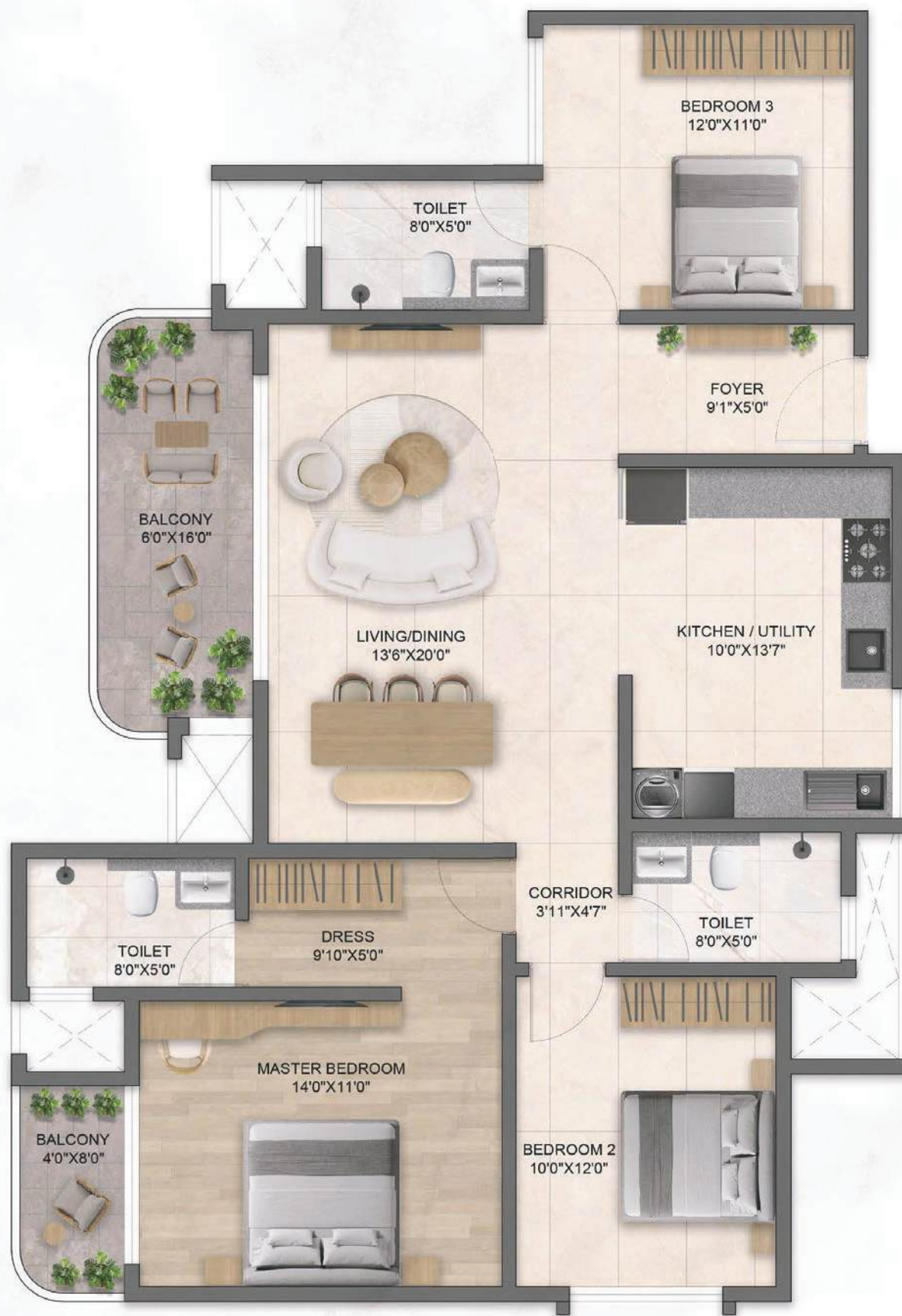


TYPICAL FLOOR

UNIT NO.S	TYOLOGY	RERA CARPET AREA (SQFT)	BALCONY AREA (SQFT)	SUPER BUILT-UP AREA (SQFT)
0003 to 3303	3.5 BHK	1232	143	1992

WING D

TYPICAL FLOOR UNIT 04



TYPICAL FLOOR

UNIT NO.S	TPOLOGY	RERA CARPET AREA (SQFT)	BALCONY AREA (SQFT)	SUPER BUILT-UP AREA (SQFT)
0204 to 1804, 2024 to 2804, 3004 to 3304	3 BHK PLUS	1127	134	1828

WING E

TYPICAL FLOOR PLAN



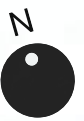
MASTER KEY PLAN

TYPICAL FLOOR

UNIT NO.S	TPOLOGY	RERA CARPET AREA (SQFT)	BALCONY AREA (SQFT)	SUPER BUILT-UP AREA (SQFT)
0201 to 3301	3.5 BHK	1278	145	2062
0102 to 3302	3 BHK PLUS	1093	125	1764
0103 to 1803, 2003 to 2803, 3003 to 3303	3 BHK PLUS	1097	132	1780
0204 to 3304	3.5 BHK	1277	135	2046

WING E

TYPICAL FLOOR UNIT 01



TYPICAL FLOOR

UNIT NO.S	TPOLOGY	RERA CARPET AREA (SQFT)	BALCONY AREA (SQFT)	SUPER BUILT-UP AREA (SQFT)
0201 to 3301	3.5 BHK	1278	145	2062

WING E

TYPICAL FLOOR UNIT 02

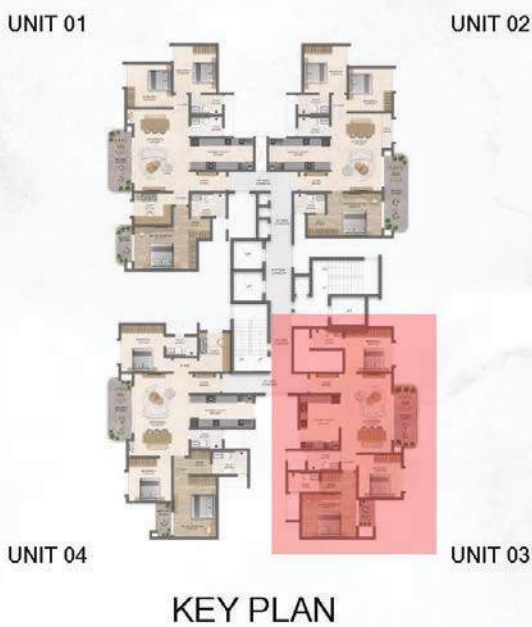


TYPICAL FLOOR

UNIT NO.S	TPOLOGY	RERA CARPET AREA (SQFT)	BALCONY AREA (SQFT)	SUPER BUILT-UP AREA (SQFT)
0102 to 3302	3 BHK PLUS	1093	125	1764

WING E

TYPICAL FLOOR UNIT 03



TYPICAL FLOOR

UNIT NO.S	TYOLOGY	RERA CARPET AREA (SQFT)	BALCONY AREA (SQFT)	SUPER BUILT-UP AREA (SQFT)
0103 to 1803, 2003 to 2803, 3003 to 3303	3 BHK PLUS	1097	132	1780

WING E

TYPICAL FLOOR UNIT 04



UNIT 01



UNIT 04

KEY PLAN

UNIT 02

UNIT 03

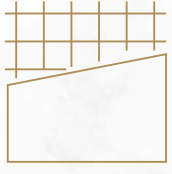


MASTER KEY PLAN

TYPICAL FLOOR

UNIT NO.S	TPOLOGY	RERA CARPET AREA (SQFT)	BALCONY AREA (SQFT)	SUPER BUILT-UP AREA (SQFT)
0204 to 3304	3.5 BHK	1277	135	2046

SPECIFICATIONS



Structure

- Structural system: Monolithic shear wall structure designed for seismic compliance



Lobby

- Elegant ground floor lobby with flooring & cladding in granite / vitrified tiles
- Combination of vitrified tiles / granite for flooring & cladding for upper floor lobbies



Flooring

- Foyer, living, dining, kitchen, other bedrooms & utility large vitrified premium quality tile flooring
- Master bedroom: Premium vitrified wooden texture tile flooring



Toilets

- Floor & dado: Vitrified tiles
- Counters with a ceramic wash basin from TOTO / American Standard, or an equivalent brand
- EWCs: TOTO / American Standard, or an equivalent brand
- CP fixtures: TOTO / Hansgrohe or an equivalent brand
- Single lever tap & shower
- Provision for a geyser point in all toilets
- Grid false ceiling



Kitchen & Utility

- Kitchen dado tile and counter will not be provided
- Provision for water supply and drain out for sink, dishwasher, washing machine and water purifier



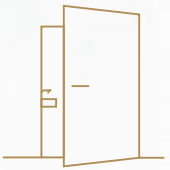
Utility, Balcony & Common Area Staircase

- MS railing



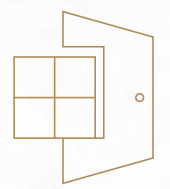
Main Door & Bedroom Door

- Hardwood frame / Engineered wood frame, veneered flush shutters and PU polish on both sides
- Digital lock for main door



Toilet Door

- Hardwood frame / Engineered wood frame, veneered flush shutters with PU polish on one side and laminated finish on the other side



External Doors & Windows

- UPVC framed sliding shutters with mosquito mesh shutters for living room
- UPVC framed windows with mosquito mesh



Electrical

- Switches & sockets: Legrand / Schneider, or an equivalent brand
- Sufficient power outlets & lighting points provided in all rooms
- Wires: Havells / Polycab / KEI, or an equivalent brand
- TV point provision: Living & master bedroom
- Data point provision: Living & master bedroom
- Split AC point: Living & all bedrooms
- Exhaust fan point: All bathrooms
- Geyser point: All bathrooms
- 4 BHK - 8 kW
- 3.5 BHK - 6 kW
- 3 BHK Plus - 6 kW
- 3 BHK - 5 kW
- 2 BHK - 4 kW



Security System

- Security at all entrances & exits with CCTV coverage



DG Power

- 100% power backup with 50% diversity factor



WE DON'T JUST **BUILD** HOMES. WE **BUILD** BEAUTIFUL.

Founded in 2015 by visionary architect Kiran V, Bricks and Milestones has set new benchmarks in luxury, sustainability and thoughtful design. Guided by the philosophy of "creating masterpieces," Bricks and Milestones seamlessly blends cutting-edge architecture with eco-conscious living. Every project is a testament to innovation, elegance and meticulous craftsmanship, delivering exclusive, low-density communities designed for those who seek more. From handpicking the finest locations to collaborating with world-class designers, Bricks and Milestones ensures that every home is a legacy in the making. With a commitment to excellence and sustainability, we continue to shape the future of premium living.



ONGOING WONDERS

The Earthscape

1258 premium apartments with large 3, 3.5, 4BHK & 4 BHK duplex configuration in 23 acres

Lagos

Our entry into North Bengaluru, Lagos is a 25-acre villa plots development off STRR - Devanahalli Road, designed as a statement of scale and aspiration

UPCOMING MARVELS

Sarjapur Road

Plotted development in 40 acres (Phase 1)

Nandi Hills

Villa project in 30 acres (Phase 1)

Sarjapur Road

Township with apartments, retail, hospital in 90 acres

PAST MILESTONES

Residential Masterpieces

New Dawn | Wonderwall | Felicity

Commercial Icons

The Fore | Vgr Essor | Iris

Corporate Office

Bricks & Milestones Homes LLP

#1140, VGR Essor, 3rd Floor, 17th Cross, 6th Main, 7th sector, HSR layout, Bengaluru, 560102

Ph: 080 2572 1188 | www.bricksandmilestones.com

Solcrest site

Sy No. 25/1, Bileshivale main road, Rampura Village, Hobli, Hennur, Bidarahalli, Bengaluru, Karnataka 562149

Ph: 755 755 3131

In association with **BILLORE VENTURES**

Solcrest | Site office

Sy No. 25/1, Bileshivale main road, Rampura Village,
Hobli, Hennur, Bidarahalli, Bengaluru, Karnataka 562149

Ph: 755 7553 131

Bricks & Milestones | Corporate office

VGR Essor, 1140, 3rd floor, 17th Cross Road, 6th Main Rd, Sector 7,
HSR Layout, Bengaluru, Karnataka 560102

Ph: 080 2572 1188

Website: bricksandmilestones.com

SOLCREST

by



**bricks
& milestones**

MEMBER

CREDAI
BENGALURU

Disclaimer: The information in this document about the project is of a very general nature. The images or visuals, layout, plans, themes, project landscape, interiors, lighting, specifications, and amenities are only representational and for information purposes and are merely an architect's impression and are indicative of the envisaged developments, which may vary during execution. The Promoter reserves the right to make additions, deletions, alterations, or amendments as and when it deems fit and proper, without prior notice. The furniture shown in the plans is only for the purpose of illustrating a possible layout and does not form part of the offering or specifications. The relationship between the Promoter and actual customers will be governed strictly by the agreements executed from time to time and not by the terms of this promotional presentation or promotional document. You are required to verify all project details independently before making any decision to purchase a unit in this project.

The content of this brochure should not be considered an offer by the Promoter.

RERA no: PRM/KA/RERA/1251/446/PR/151225/008336